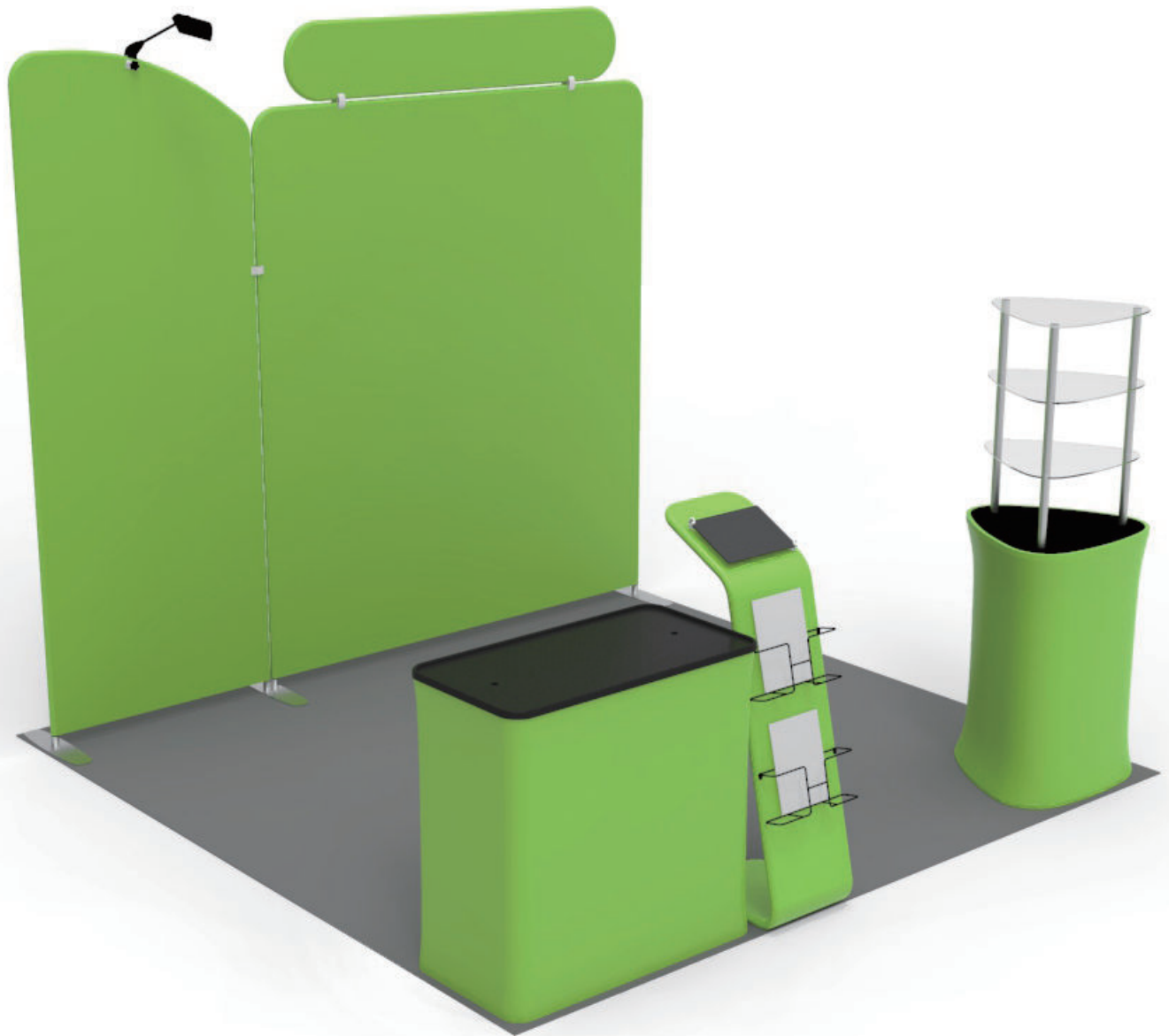


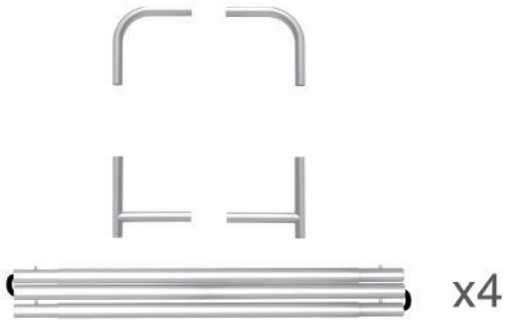
INSTRUCTION



10X10FT-BOOTH-C

STEPS

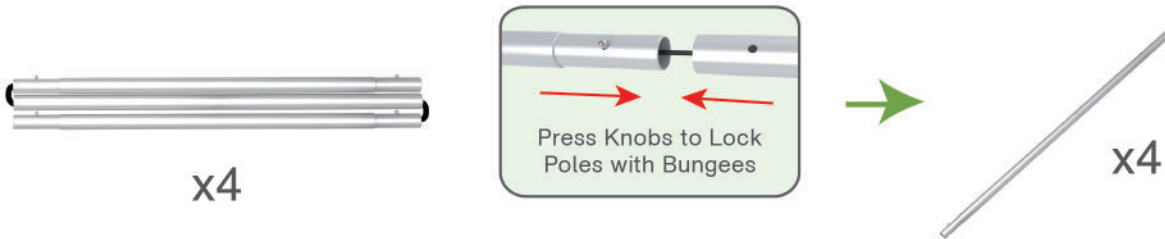
(1) Hardware



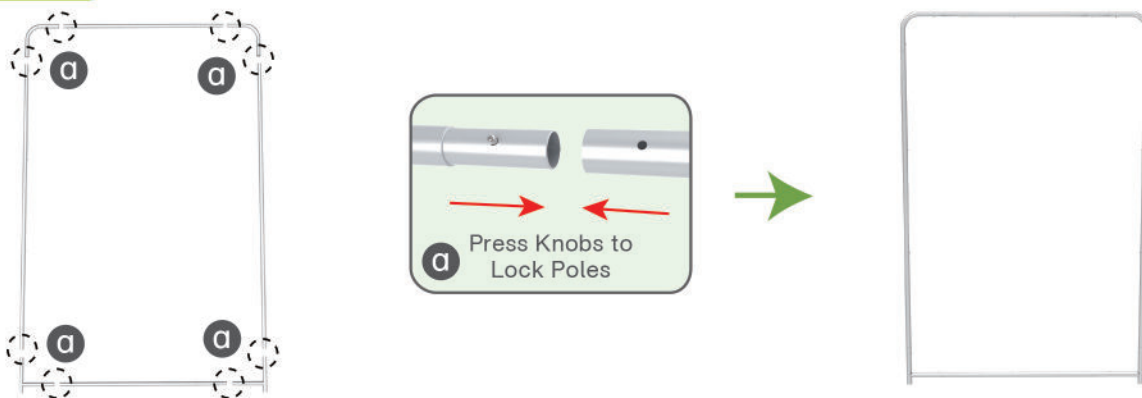
(2) Printed Graphic Fabric Banner (Optional)



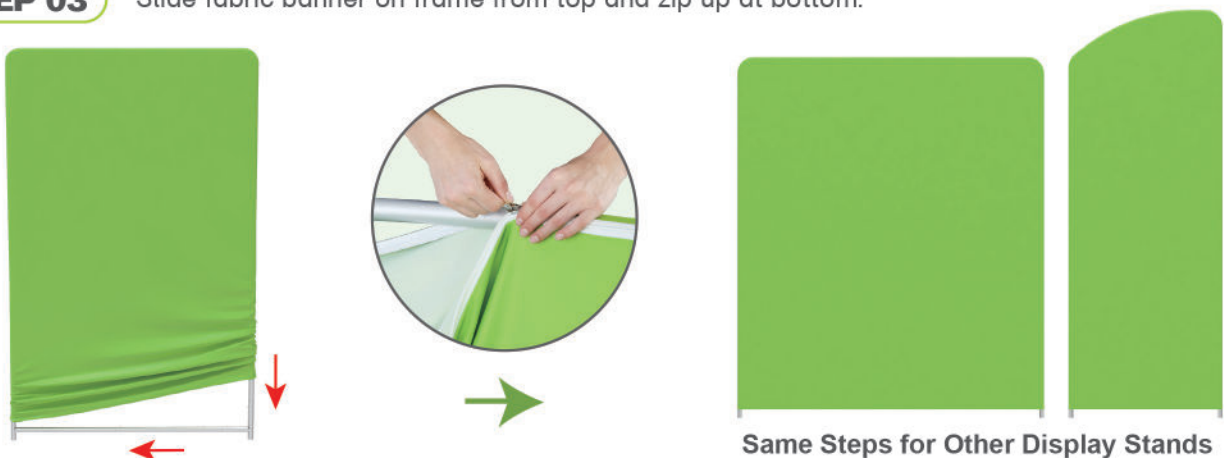
STEP 01 Connect to make long poles according to labelings.



STEP 02 Connect long poles with corner poles according to labelings.

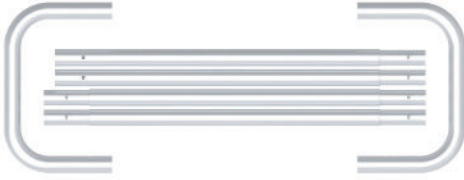


STEP 03 Slide fabric banner on frame from top and zip up at bottom.



STEPS

(1) Hardware

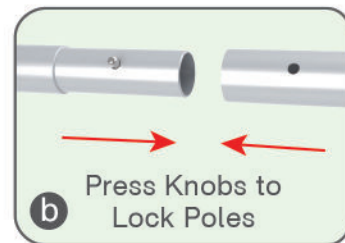
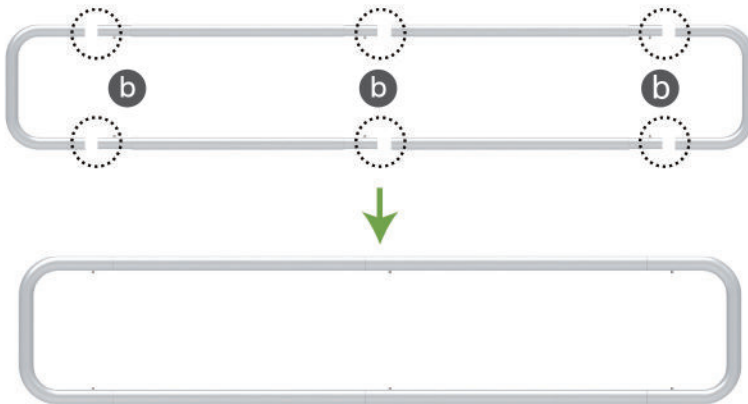


(2) Printed Graphic Fabric Banner (Optional)



STEP 01

Connect poles according to labelings.



STEP 02

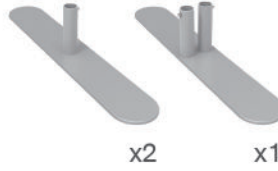
Slide fabric banner on frame from left and zip up at right.



STEPS



(1) Base



(4) LED Light & Clip

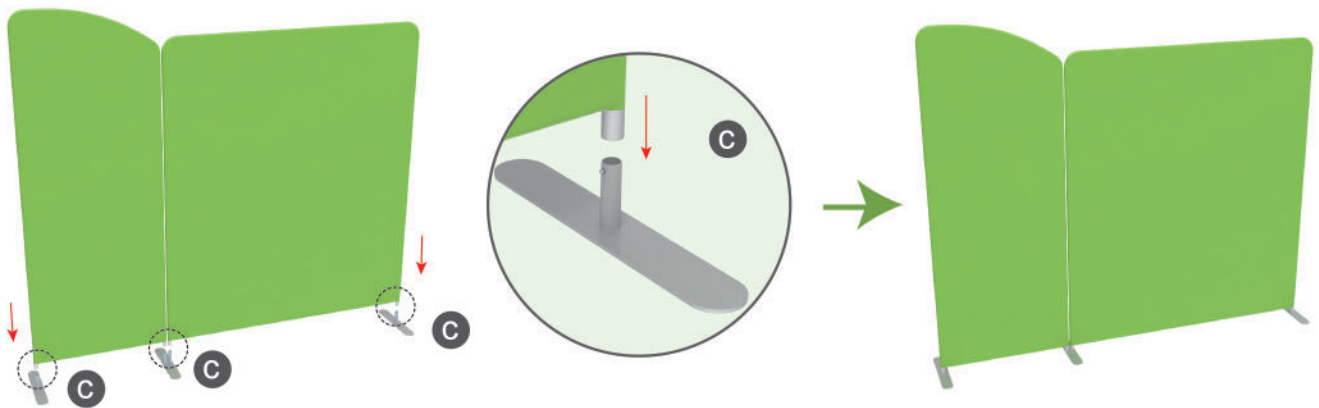


(3) 180° C-Shaped Clip



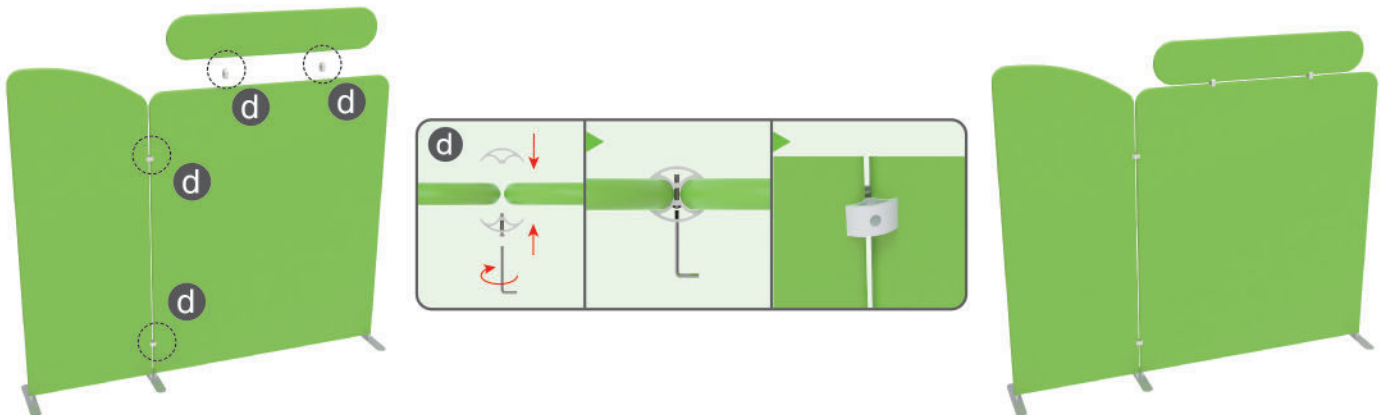
STEP 01

Insert display stands onto feet by pressing their knobs.



STEP 02

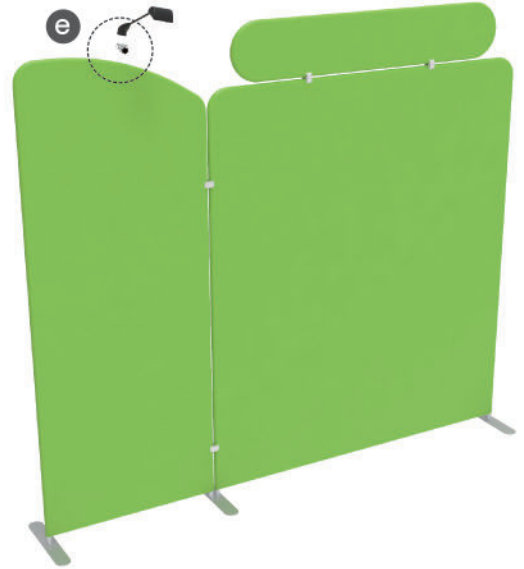
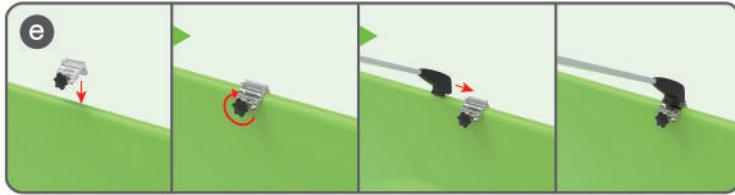
Interconnect display stands with C-shaped clips.



STEPS

STEP 03

Screw light clips at top of display stands, slide lights onto them and adjust their direction.



10X10FT-BOOTH-C

★ One Tool (Hex Wrench) 

STEPS

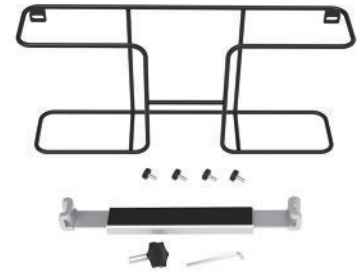
(1) Snap Tubes



(2) Printed fabric banner

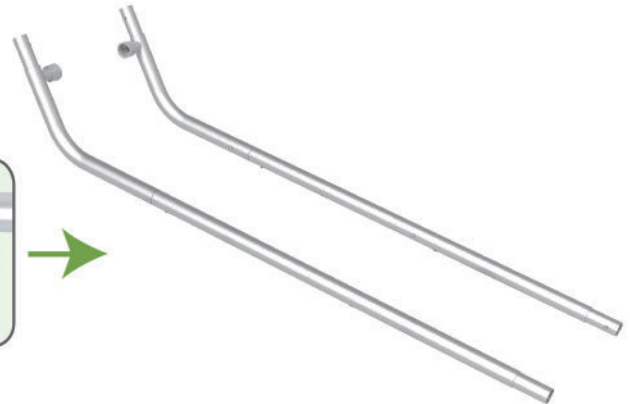
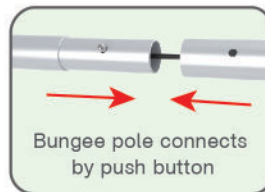


(3) Brochure rack x 2 / Screws x 4
Tablet PC holder x 1



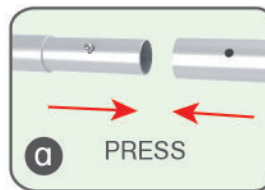
STEP 01

To Connect the tubes according to the labellings



STEP 02

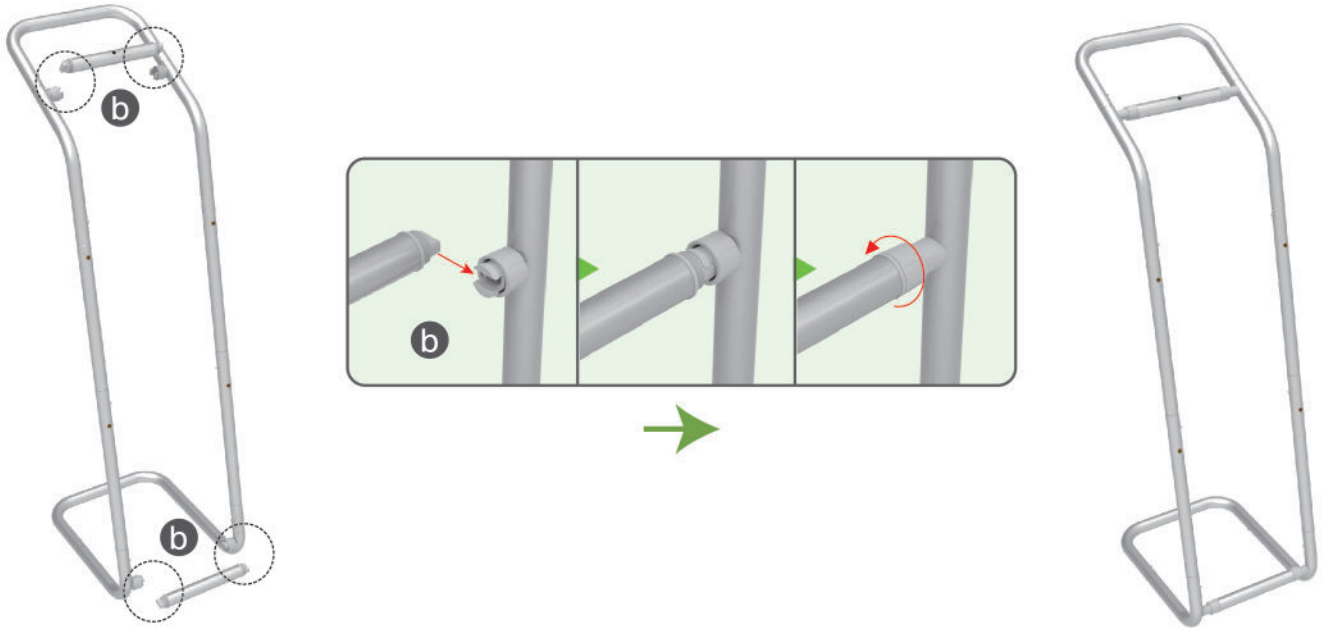
To connect 2 long side tubes by the corner pieces



STEPS

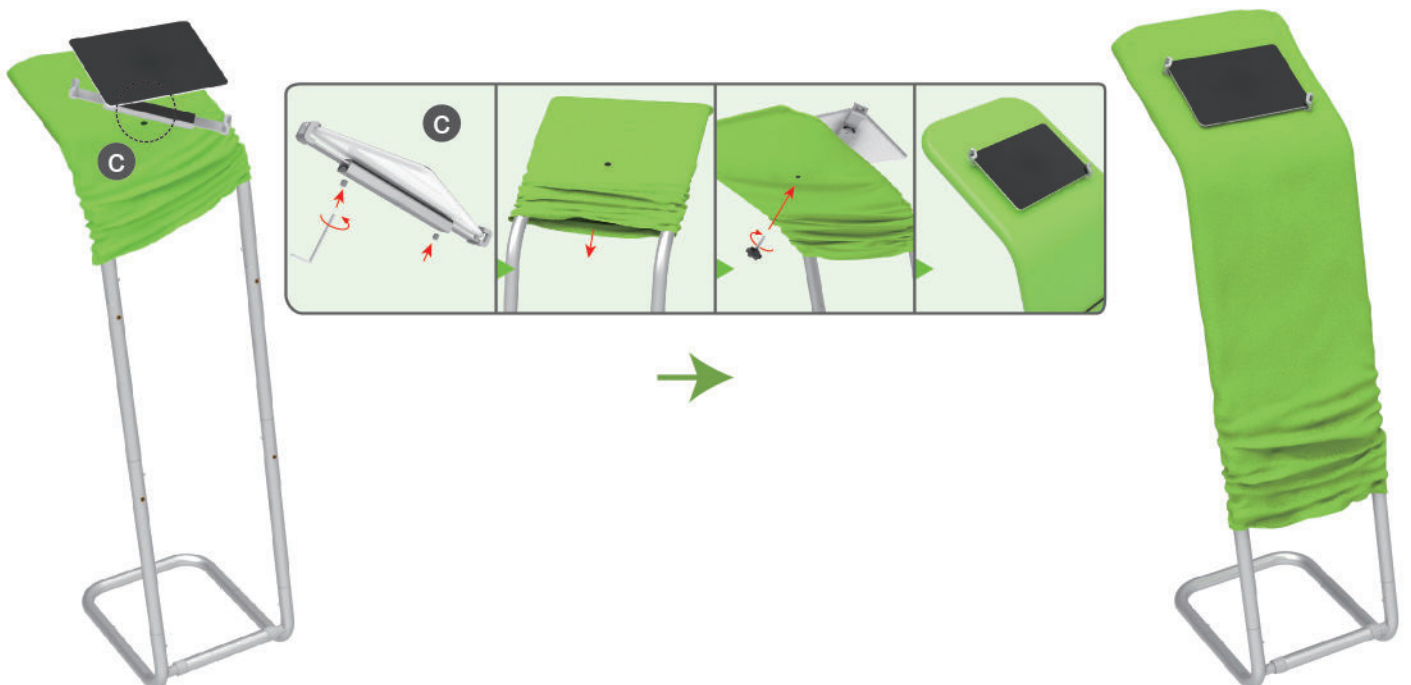
STEP 03

To install the cross bar according to labellings



STEP 04

To wrap the fabric from top to the middle of frame, then put the iPad in the holder and adjust the holder to right size and lock it by Allen Key Afterwards, install the set to the display stand.



STEPS

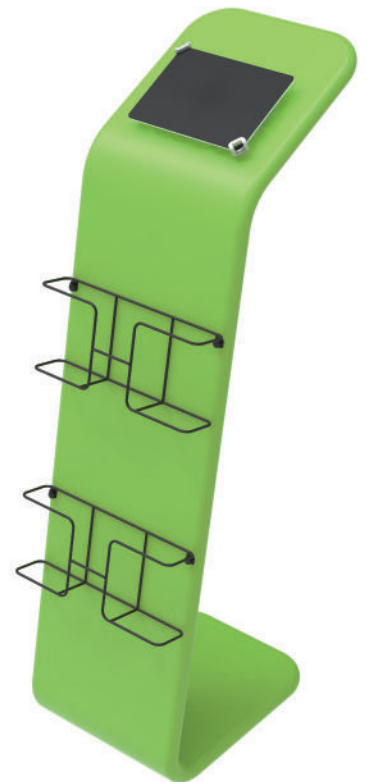
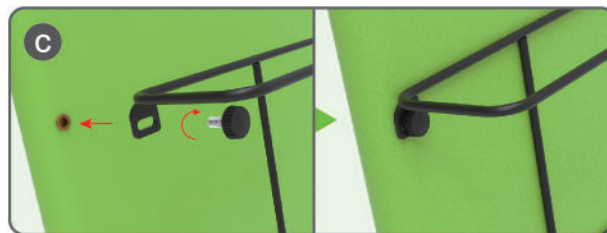
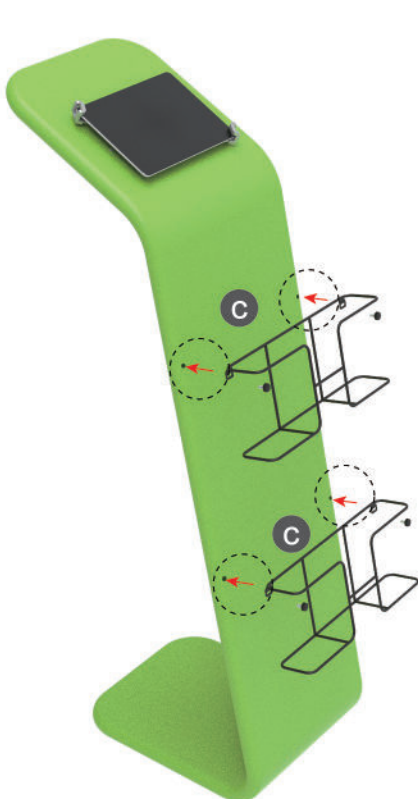
STEP 05

To pull the fabric banner to bottom and zip up.



STEP 06

To Install 2 racks by screws in position



STEPS

(1) Durable Plastic Hard Case, Aluminum Support Poles



(2) Printed Graphic Fabric Banner



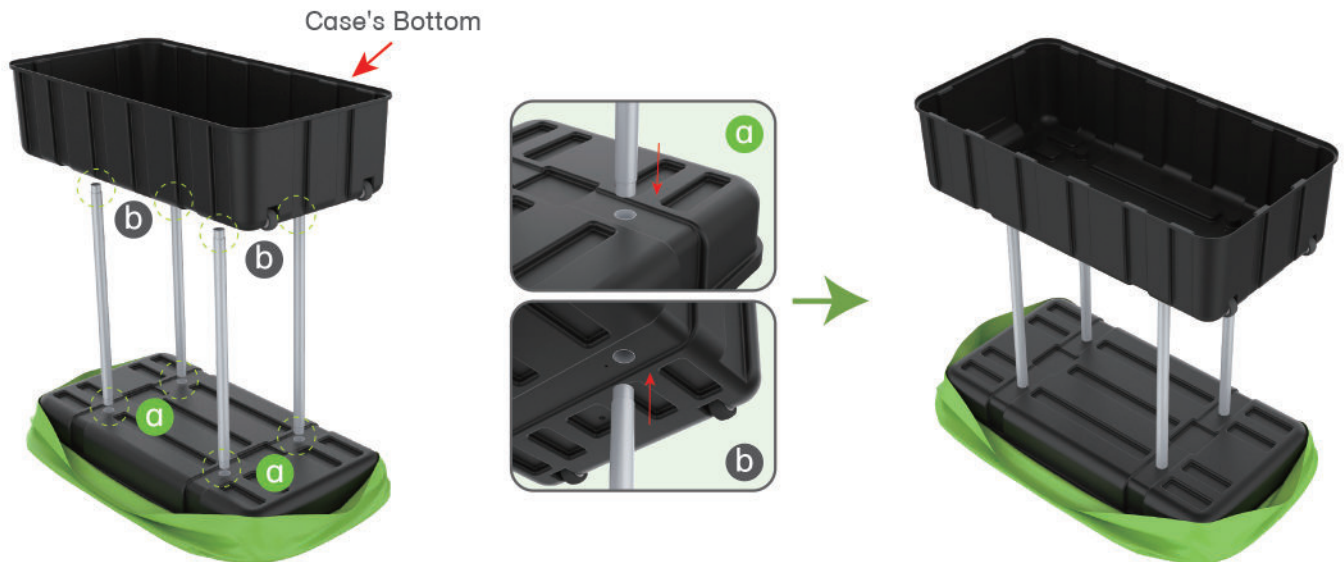
STEP 01

Put hard case's top into fabric banner.



STEP 02

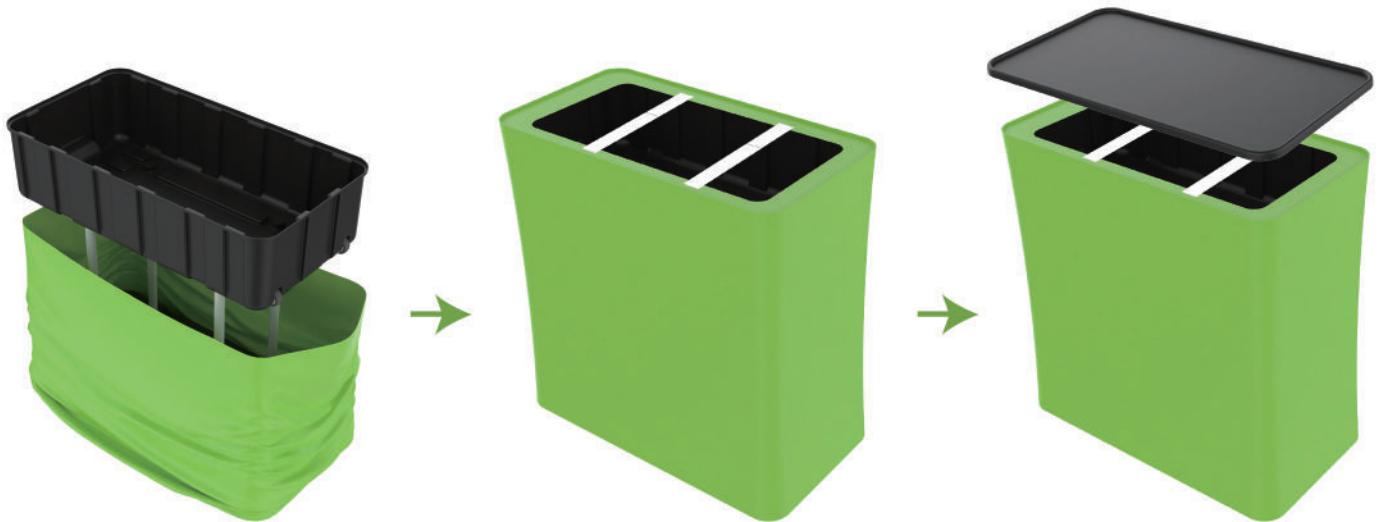
Insert support poles into hard case's top & bottom.



STEPS

STEP 04

Wrap fabric banner from bottom to top & twist it to be smooth, lay hard case's intermediate panel on podium's top.



★ One Tool (Hex Wrench) 

STEPS

(1) Straight Support Poles



(2) Top MDF Board, Bottom MDF Board, Acrylic Boards

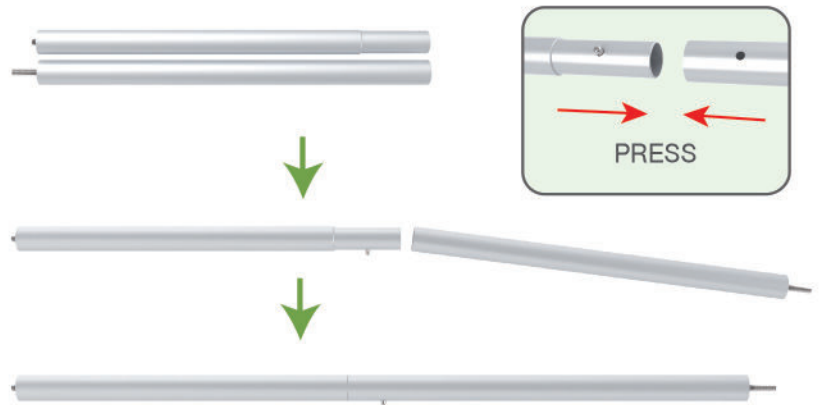


(3) Printed Graphic Fabric Banner



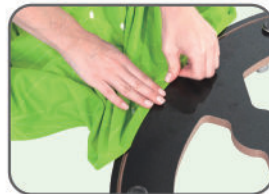
STEP 01

Connect straight support poles by pressing knobs to lock.



STEP 02

Insert fabric banner into bottom MDF board's slot and turn it over.



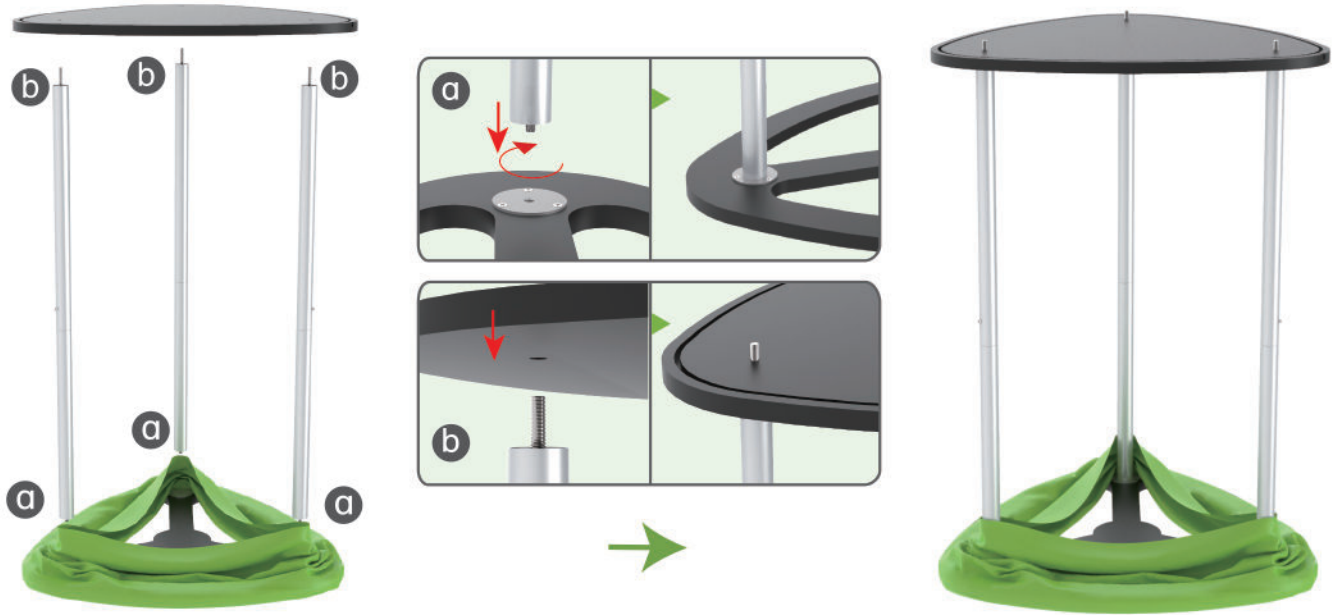
PRESS



STEPS

STEP 03

Screw straight support poles in bottom MDF board's threaded holes and place top MDF board on them.



STEP 04

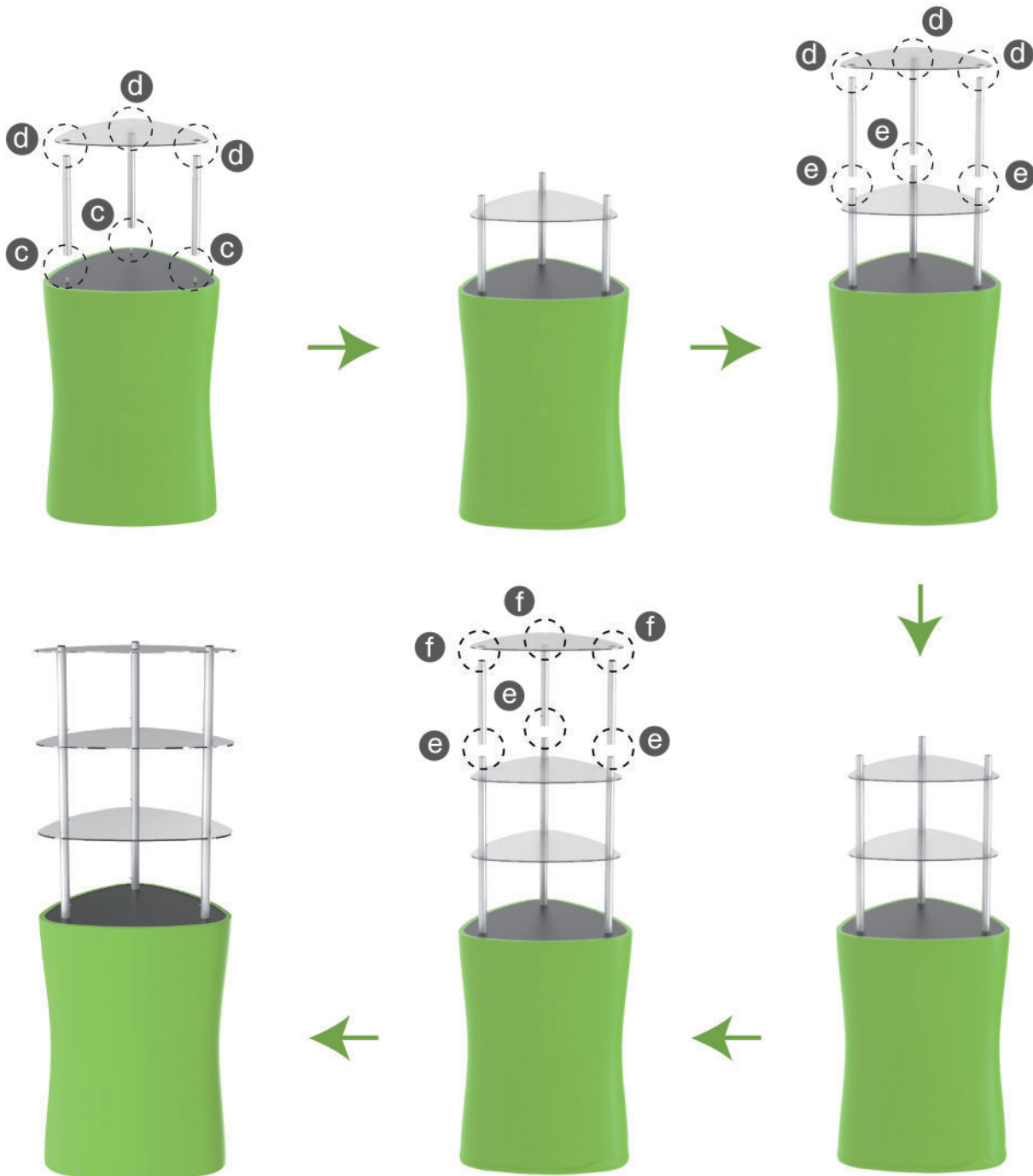
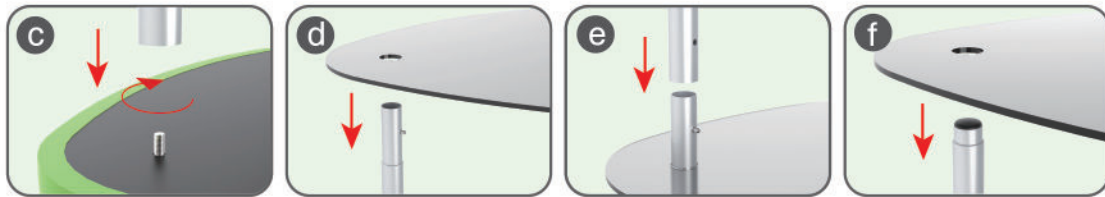
Pull fabric banner from bottom to top and insert into top MDF board's slot.



STEPS

STEP 05

Screw straight support poles with threaded holes filled onto nuts and place acrylic boards on them layer by layer.



STEPS



DT-S-02



DT-S-01



DT-S-03